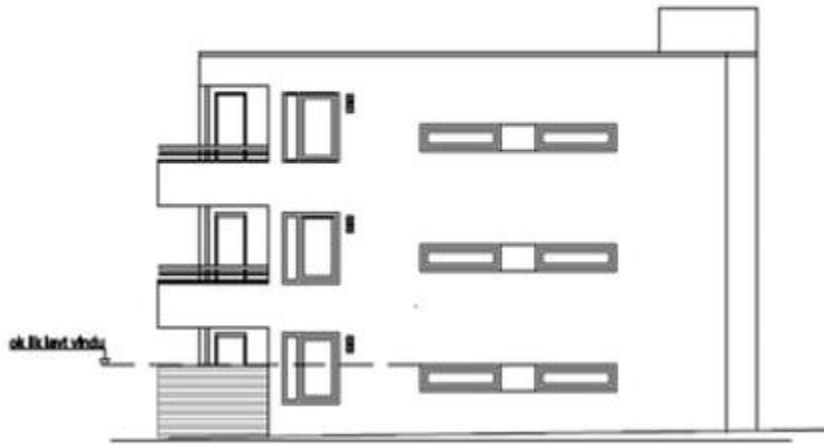
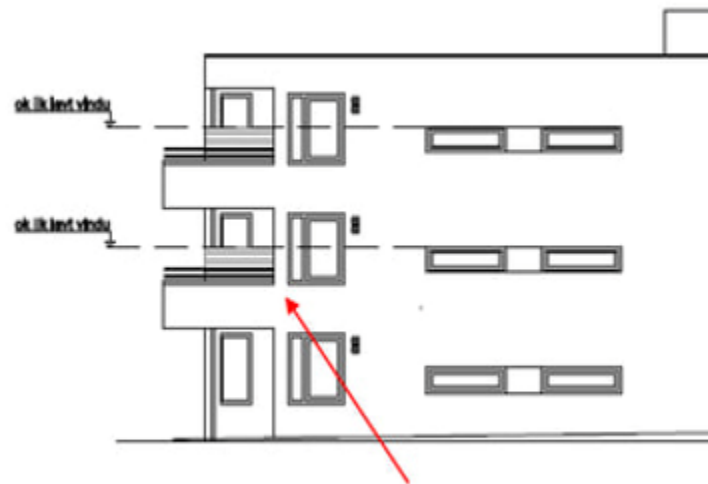
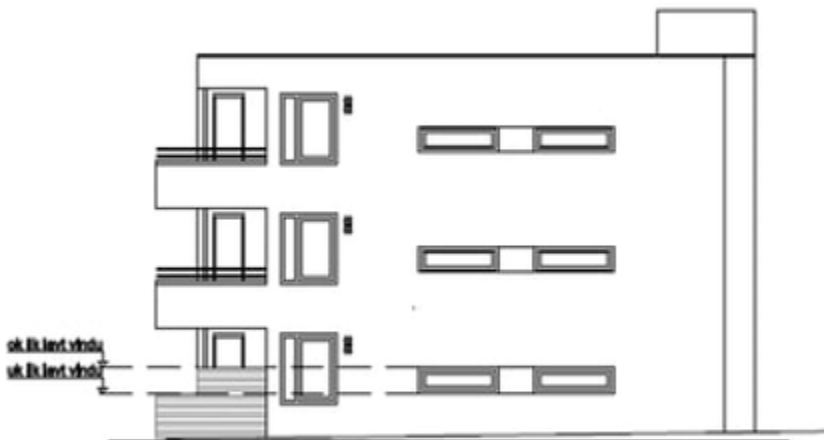


For endeleilighetene i hus 2, 3, 5, 6, 7 og 8:

Godkjent levegger – plan



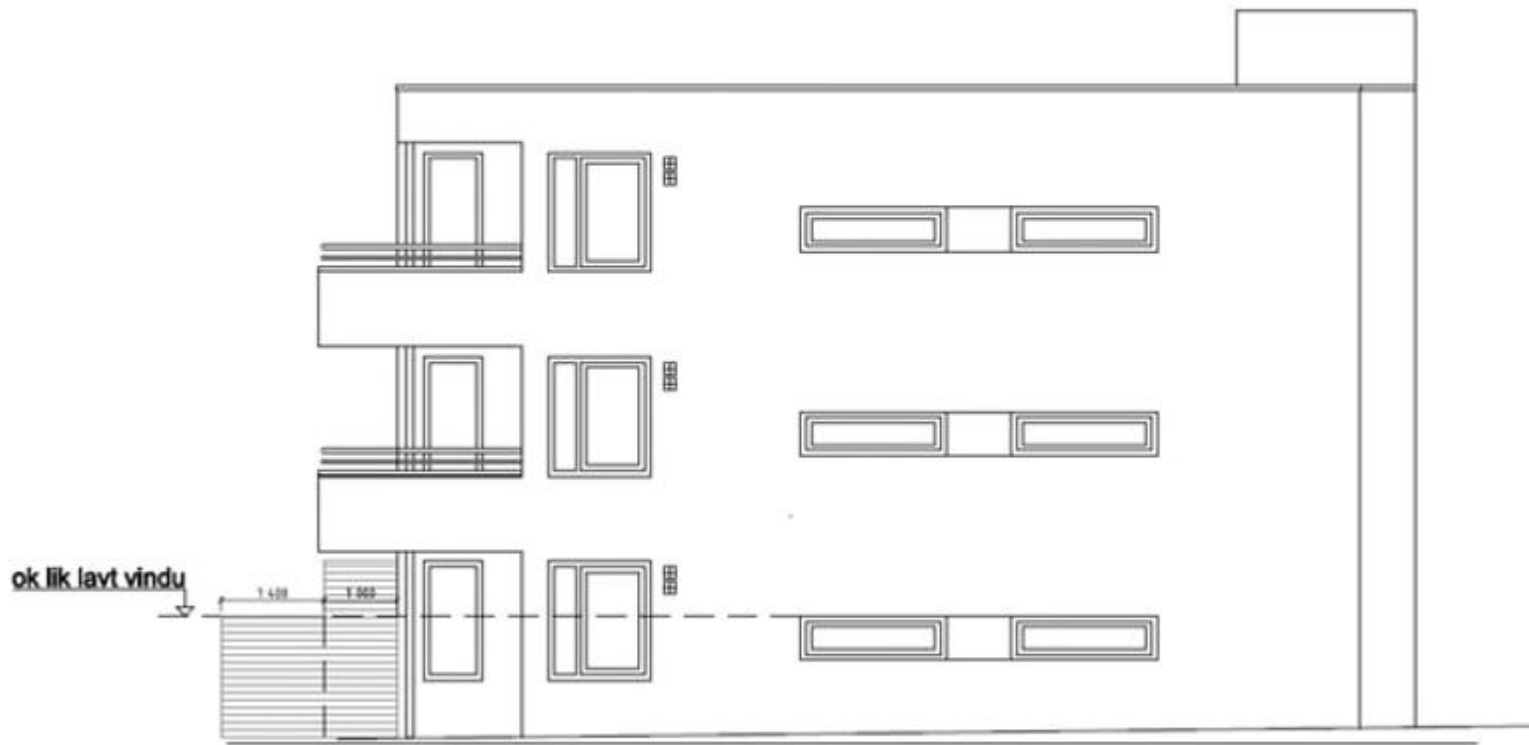
Disse typene gjelder endeleiligheter i Hus 2, 3, 5, 6, 7 og 8



Godkjent levegger – plan 2 og 3

For midtleilighetene på bakkeplan:

Godkjent levegg – plan 1



Denne typen gjelder leiligheter på bakkeplan i midten